

BARRIER 1. THE POLICY NEEDS DATA

Javier Franco, AZTI

Questions on data availability

- Is there available information and data on marine issues relevant to the RICORE aims?
- Do we know what data already exist and where this is available?
- Does the existing platforms, systems and portals provide information on the most relevant components regarding consenting processes and/or the components most likely affected by MRE devices and projects?
- Does the existing information systems provide data at the required level and resolution (geographic, spatial and temporal scales)

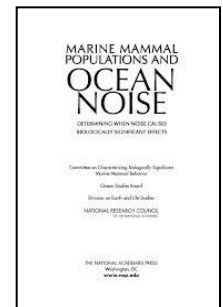
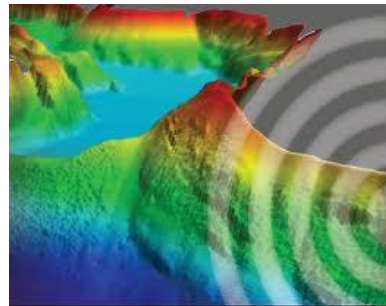
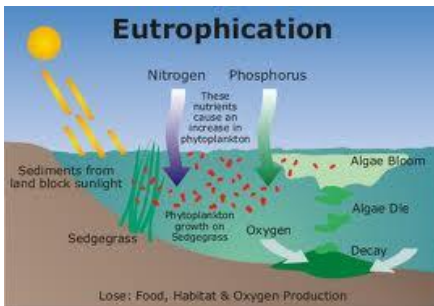
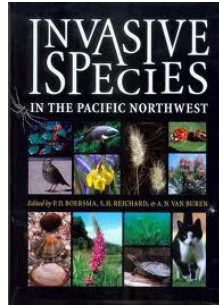
BARRIER 1. THE POLICY NEEDS DATA

Questions on data MSFD-oriented

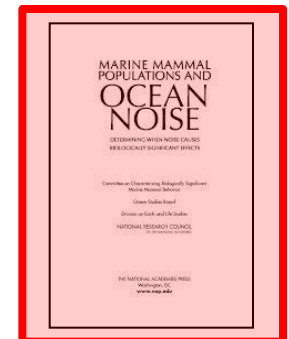
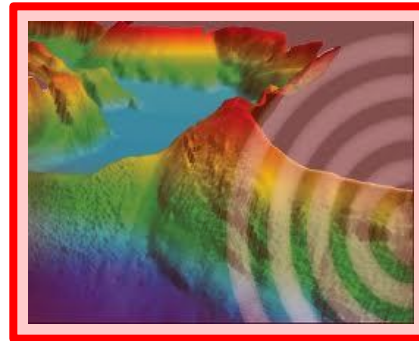
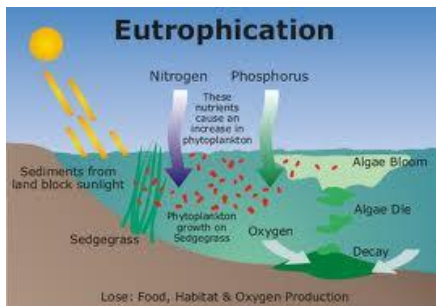
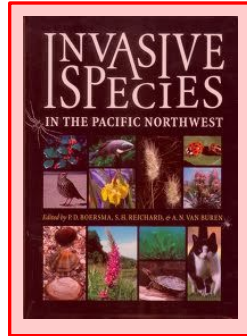
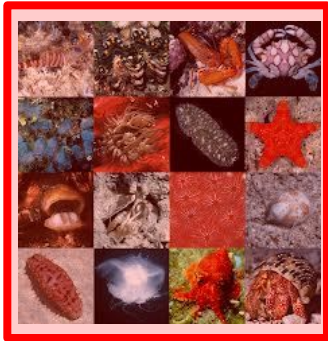
Considering the obligation of all EU MS to fulfil the requirements of the Marine Strategy Framework Directive:

- Are the MSFD issues adequately addressed and assessed in the consenting processes of MRE in the MS?
- Are these issues adequately addressed in the RICORE project?
- What are the main gaps of information (data) in this regard?

BARRIER 1. THE POLICY NEEDS DATA



BARRIER 1. THE POLICY NEEDS DATA





ricore-project.eu

Workshop 3 – Understanding the barriers to, and providing
recommendations for, a risk based approach to MRE licensing
DUNKELD, SCOTLAND November, 9-10, 2015

BARRIER 1. THE POLICY NEEDS DATA

Suggestions and ideas for debate

- Catalogue of the information and data sources relevant to RICORE.
- Analysis at metadata level of the data sources for a quick assessment of available and useful data in consenting processes.
- Integrating MSFD requirements in the preconsenting and postconsenting processes.