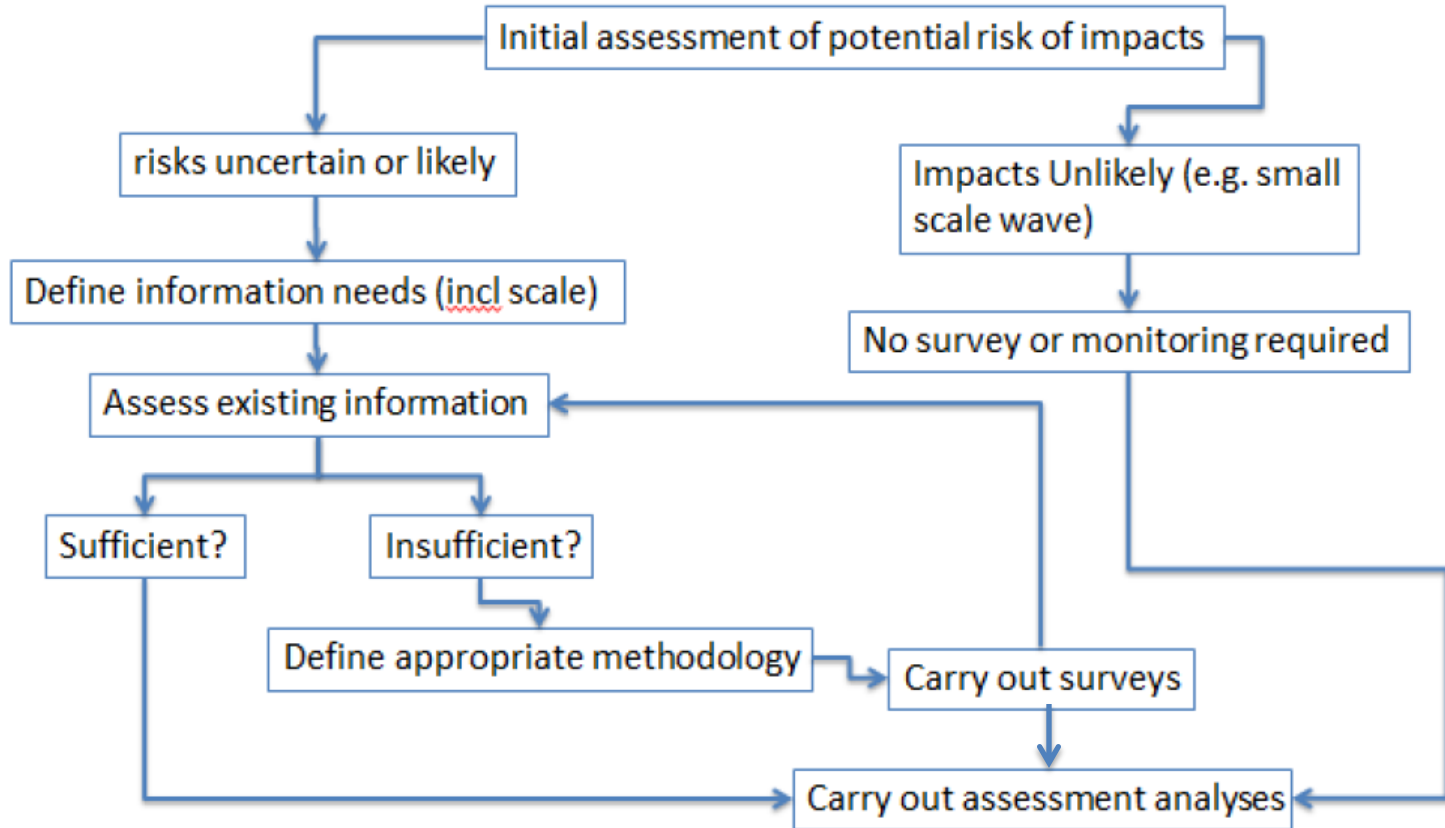


Stopping the DRIP for marine mammal impacts: agreeing survey requirements to inform EIA & HRA



Stopping the DRIP for marine mammal impacts: agreeing survey requirements to inform EIA & HRA

- Has to focus on specific impact pathways/questions – each impact pathway has particular information requirements and sensitivities; ‘one size fits all’ doesn’t work
- Critical assessment of the ability of available methodologies to answer specific EIA/HRA questions with any degree of precision – a precise estimate of density over typical scale is difficult to achieve
- Role for existing data /worst case scenarios in understanding potential magnitude of impacts and therefore need for more detailed data gathering
- Early consideration of monitoring and mitigation options in an adaptive management framework if uncertainty likely to remain